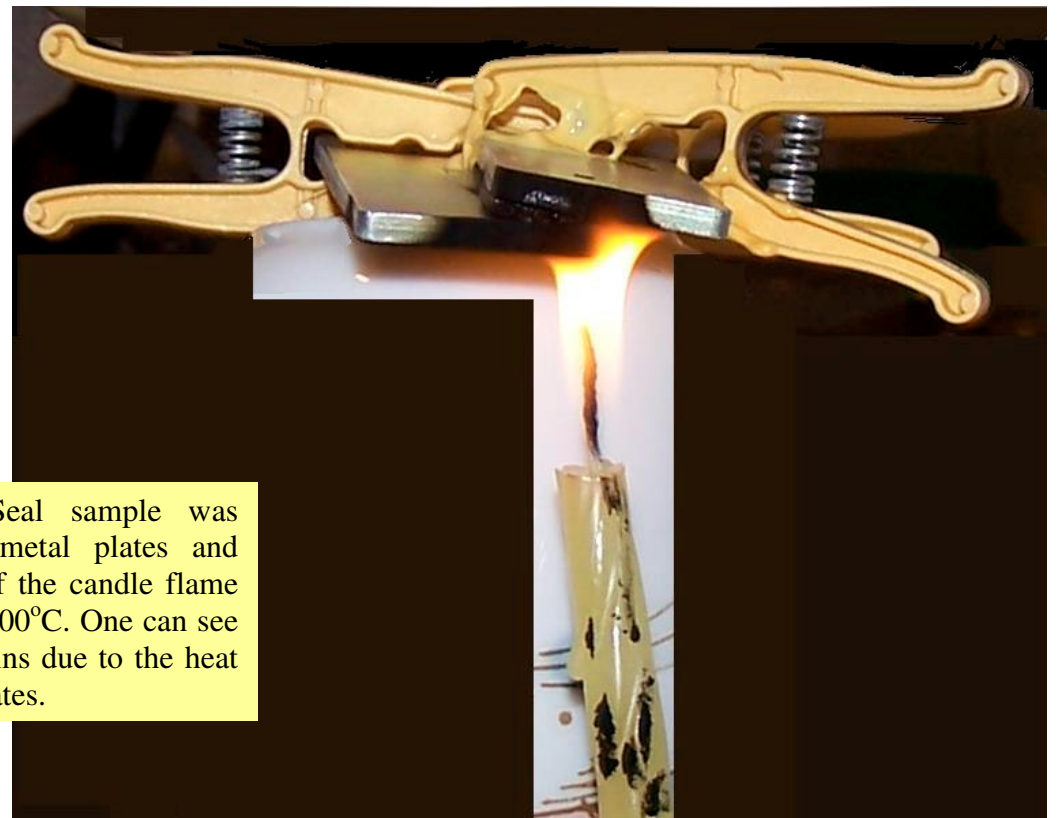
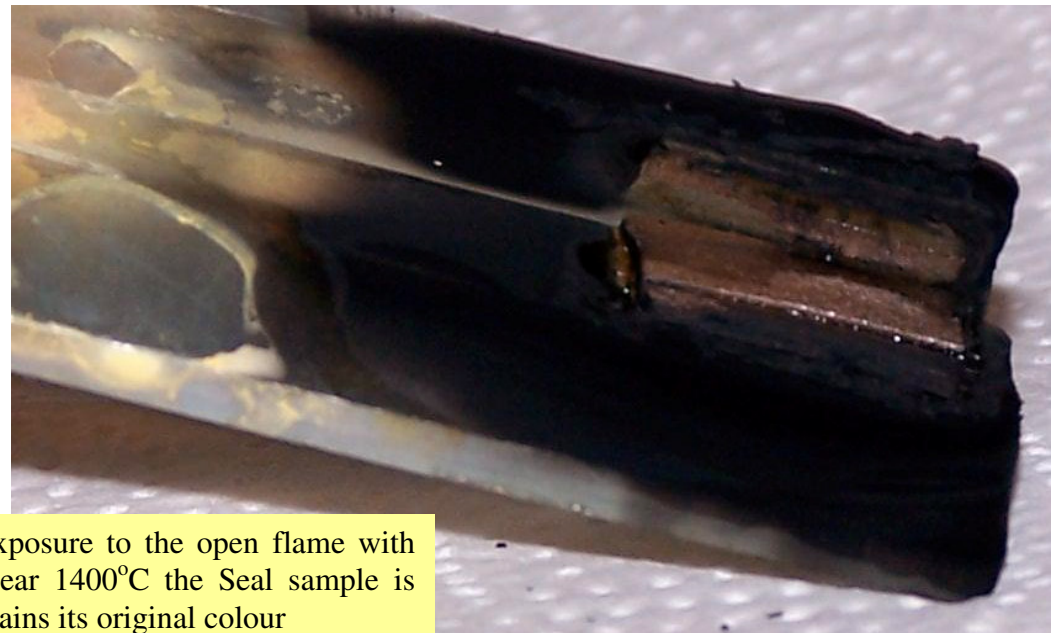


The Seal sample was glued to a metal plate before the test



Using plastic pegs the Seal sample was compressed between two metal plates and placed into the outer core of the candle flame with the temperature near 1400°C . One can see the molten peg and its remains due to the heat transfer through the metal plates.



After 30min of exposure to the open flame with the temperature near 1400°C the Seal sample is intact and even retains its original colour